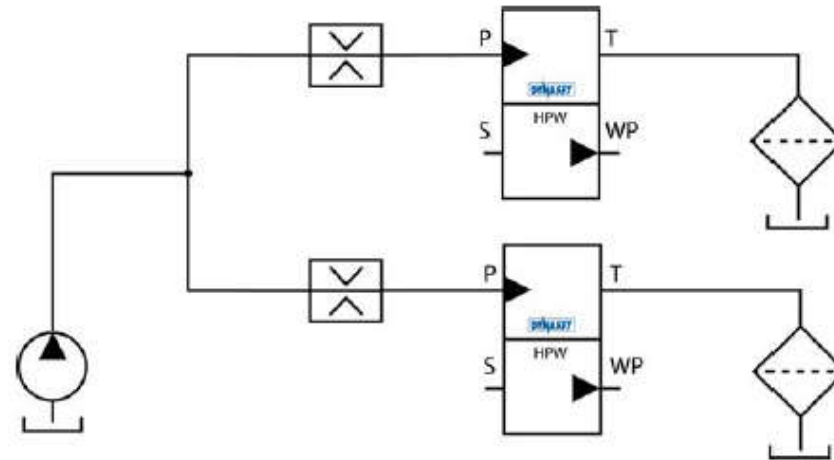


HPWM – Parallel Connection



- Flow limiter for each of the HPW's
- 2-4 pcs same type of HPW's connected together
- Increased water flow
- Same water pressure than single HPW
- Increased oil flow and same oil pressure than single HPW
- Requires flow limiter (VR) before each HPW

Hydraulic lines of multiple HPW pumps can be connected in parallel to get maximum output pressure and double the output flow. Use flow controller valves when high pressure water pumps are connected in parallel.



HPWM – Parallel Connection



- Applications where water flow of one HPW is not enough and more hydraulic flow is available
- Washing
- Flushing
- Pipe cleaning



Hydraco

www.hydraco.no